



İSTANBUL TEKNİK ÜNİVERSİTESİ – İNŞAAT FAKÜLTESİ
YAPI MALZEMESİ LABORATUVARI
34469 MASLAK / İSTANBUL TEL: (0212) 285 3757-58 FAX: (0212) 285 6587

Loading Test
Report No/Date : 677/22.10.2018
Application No/Date : 499102/22.10.2018

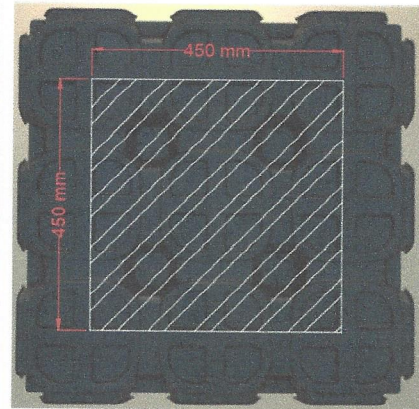
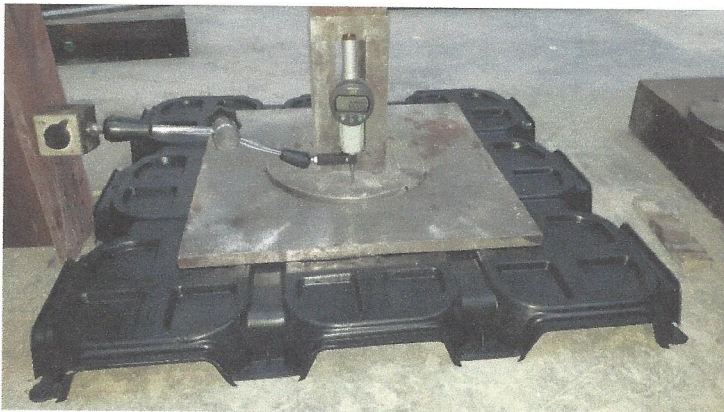
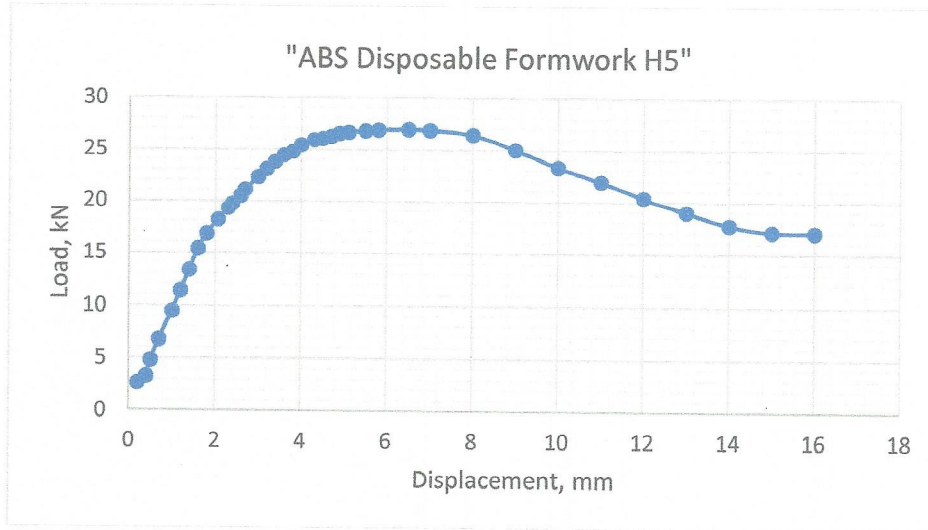
ABS YAPI ELEMANLARI SAN. TİC. LTD. ŞTİ.

According to your application dated 17.10.2018, loading test was performed on plastic formworks, using metal plates. Test results are given in the Table 1 and Table 2.

Table 1. Test Result of “ABS Disposable Formwork H5”

Sample No	Sample ID	Dimensions of Sample (mm)	Dimensions of Plate (mm)	Maximum Load	
				(kN)	(kN/m ²)
1	ABS Disposable Formwork H5	710x710x50	450x450	26,950	133,1

Note 1: The load-displacement graph of sample and photographs of test setup are given below.
Note 2: Stress calculated by taking into account the plate surface area.



MP

Q.



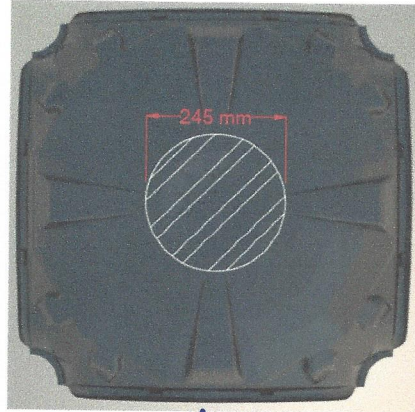
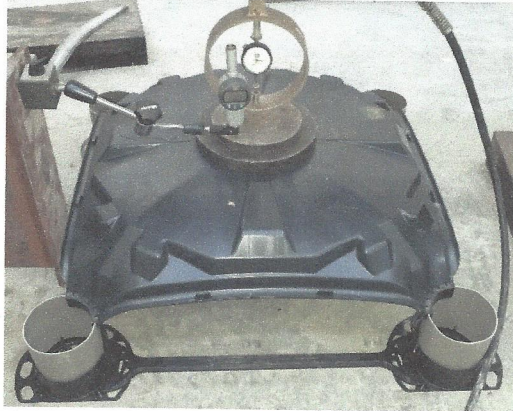
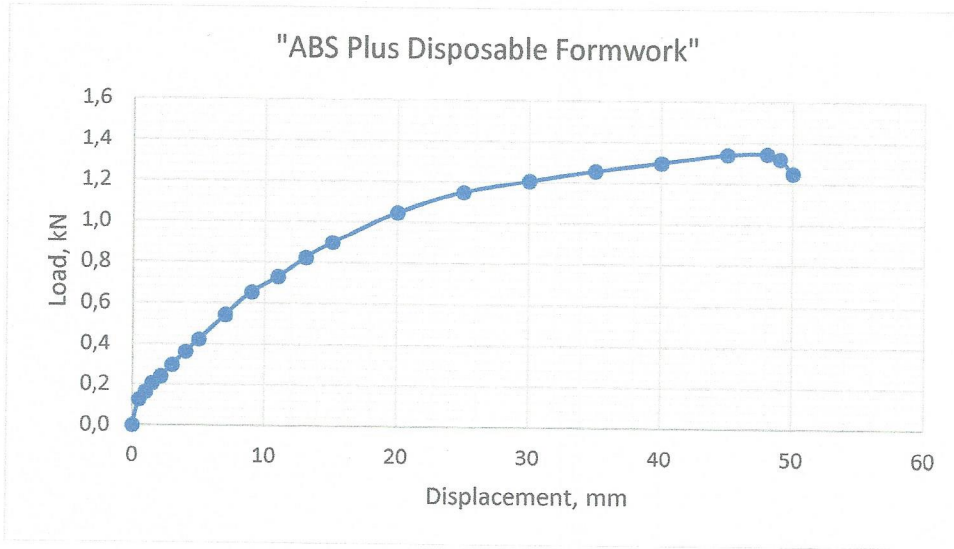
İSTANBUL TEKNİK ÜNİVERSİTESİ – İNŞAAT FAKÜLTESİ
YAPI MALZEMESİ LABORATUVARI
34469 MASLAK / İSTANBUL TEL: (0212) 285 3757-58 FAX: (0212) 285 6587


Table 2. Test Result of “ABS Plus Disposable Formwork”

Sample No	Sample ID	Dimensions of Sample (mm)	Dimensions of Plate (mm)	Maximum Load	
				(kN)	(kN/m ²)
1	ABS Plus Disposable Formwork	710x710x300	Φ245	1,346	28,6


Note 1: The load-displacement graph of sample and photographs of test setup are given below.

Note 2: Stress calculated by taking into account the plate surface area.




Hasan Nuri TÜRKMEÑOĞLU
Res. Asst.




Assoc. Prof. Dr. Özkan ŞENGÜL
Vice-Director of Laboratory